

Installer Decentralized setup
Oracle FLEXCUBE Installer
Release 14.3.0.0.0
[May] [2019]



Table of Contents

- 1. PROPERTY FILE CREATION FOR DECENTRALIZED VIA ORACLE FLEXCUBE INSTALLER1-1**
 - 1.1 INTRODUCTION 1-1
 - 1.2 CREATING PROPERTY FILE 1-1
- 2. LOADING OBJECTS INTO HOST & DC SCHEMA VIA FLEXCUBE INSTALLER..... 1-1**
 - 2.1 INTRODUCTION 1-1
 - 2.2 LOADING OBJECTS INTO HOST & DC SCHEMA..... 1-1
- 3. DECENTRALIZED APPLICATION SETUP (VIA WEBLOGIC) 1-1**
 - 3.1 INTRODUCTION 1-1
 - 3.2 APPLICATION SETUP..... 1-1
 - 3.2.1 *.ear and war file creation* 1-1
 - 3.2.2 *Deploying .ear file in WebLogic server* 1-1
 - 3.2.3 *Deploying .war file in WebLogic server* 1-4

1 Property File creation for Decentralized via Oracle FLEXCUBE Installer

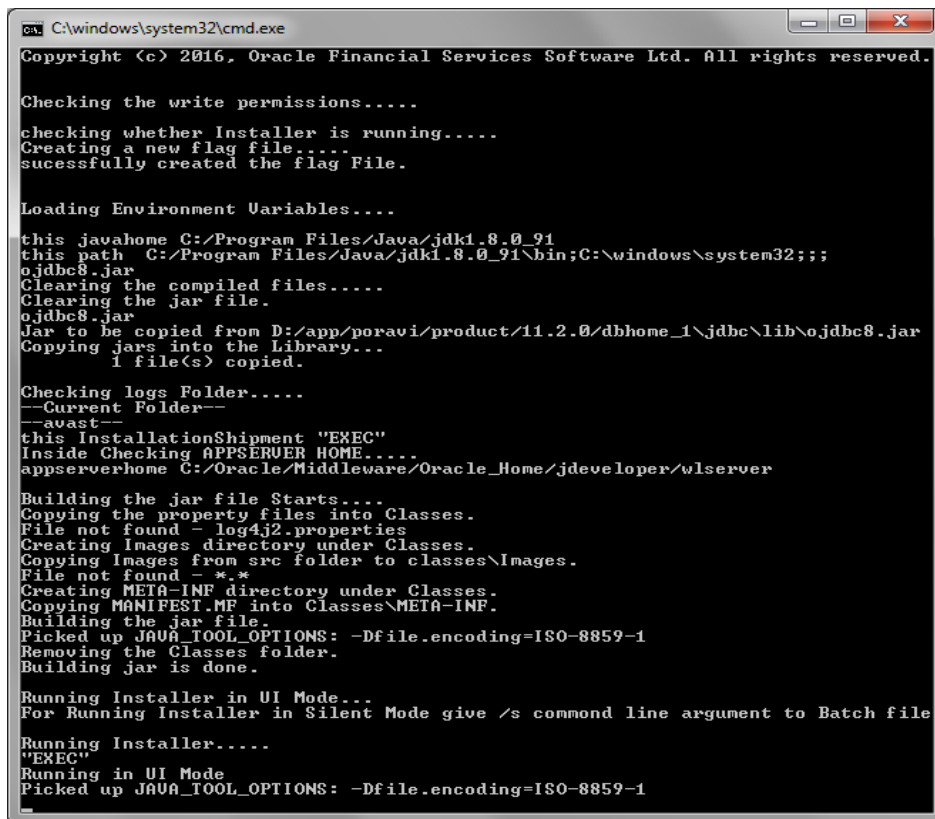
1.1 Introduction

This chapter explains the steps to create property file for Oracle Decentralized FLEXCUBE Installer Application. Two property files are created fubs property file and environment property file.

1.2 Creating Property File

To create the property file for Oracle Decentralized FLEXCUBE, follow the steps given below:

1. Launch Oracle FLEXCUBE Installer bat file i.e. **FCUBSInstaller.bat** for Windows, for linux run **FCUBSInstaller.sh**.



```
C:\windows\system32\cmd.exe
Copyright (c) 2016, Oracle Financial Services Software Ltd. All rights reserved.

Checking the write permissions.....
checking whether Installer is running.....
Creating a new flag file...
sucessfully created the flag File.

Loading Environment Variables....
this javahome C:/Program Files/Java/jdk1.8.0_91
this path C:/Program Files/Java/jdk1.8.0_91\bin;C:\windows\system32;;;
ojdbc8.jar
Clearing the compiled files....
Clearing the jar file.
ojdbc8.jar
Jar to be copied from D:/app/poravi/product/11.2.0/dbhome_1\jdbc\lib\ojdbc8.jar
Copying jars into the Library...
1 file(s) copied.

Checking logs Folder.....
--Current Folder--
--avast--
this InstallationShipment "EXEC"
Inside Checking APPSERUER HOME....
appserverhome C:/Oracle/Middleware/Oracle_Home/jdeveloper/wlserver

Building the jar file Starts...
Copying the property files into Classes.
File not found - log4j2.properties
Creating Images directory under Classes.
Copying Images from src folder to classes\Images.
File not found - *.*
Creating META-INF directory under Classes.
Copying MANIFEST.MF into Classes\META-INF.
Building the jar file.
Picked up JAVA_TOOL_OPTIONS: -Dfile.encoding=ISO-8859-1
Removing the Classes folder.
Building jar is done.

Running Installer in UI Mode...
For Running Installer in Silent Mode give /s command line argument to Batch file

Running Installer.....
"EXEC"
Running in UI Mode
Picked up JAVA_TOOL_OPTIONS: -Dfile.encoding=ISO-8859-1
```

Need to provide the following details:

JAVA HOME PATH

Provide the JDK home path with the latest version.

ORACLE HOME PATH

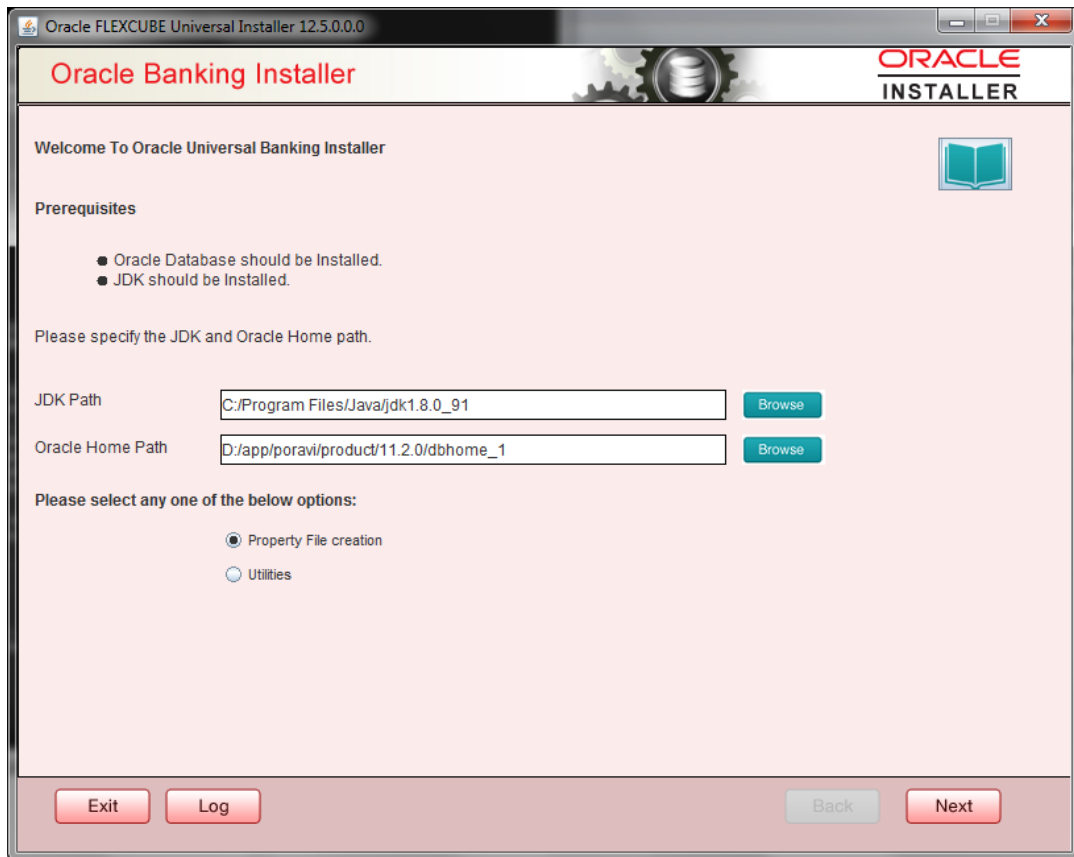
Provide the Oracle 12C Client Path.

APPSERVER PATH

Provide the Application Server Path.

After providing these details, INSTALLER-GUI gets generated. And follow the below details.

Enter the following details



JDK Path:

Maintain Home folder path of JDK1.8

Oracle Home

Maintain home folder path of Oracle Client or Database

Application Server Home

Maintain home folder path of Application Server

2. Click 'Next' and the following screen is displayed.

Components

Choose components as INFRA.

Product Processors

Choose product processors as Oracle FLEXCUBE Universal Banking.

Plugins

Select Branch and Decentralized option to load objects related to Decentralized.

Scheduler can be embedded.

Oracle FLEXCUBE Universal Installer 12.5.0.0.0

Oracle Banking Installer ORACLE INSTALLER

Select one of the Components

Load Existing Property File

INFRA Scheduler Gateway Switch Interface Installation

Select Oracle Product Processors

Oracle FLEXCUBE Universal Banking

Oracle FLEXCUBE Enterprise Limits and Collateral Management

Oracle Banking Payments

Oracle Banking Corporate Lending Open Development Tool

Select Plugins to be Installed

Branch Load Existing Branch Property File

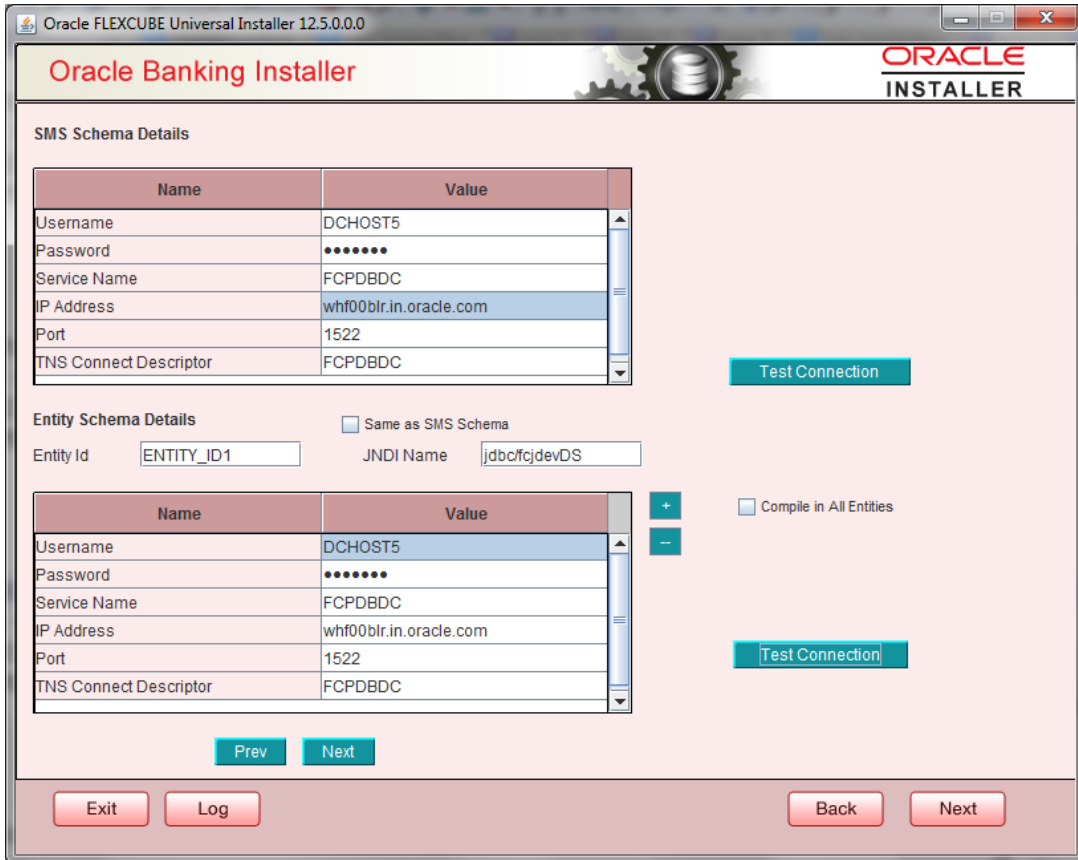
Host Address BPEL Scheduler

Reports OFTW FGL ELCM Adapter required

DMS FIS-HOST Insulation

3. Click 'Next' and the following screen is displayed:

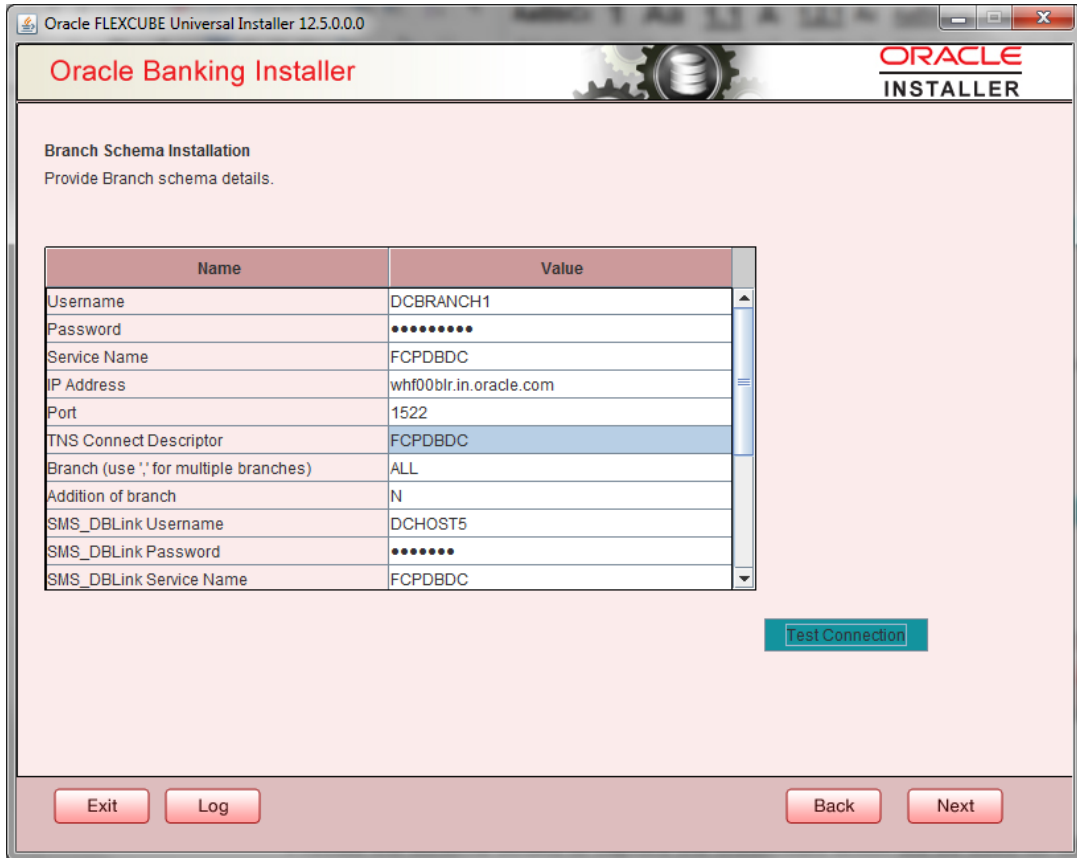
Specify SMS and Host schema details, Test connection to assure schema details provided are proper.



4. Click 'Next' and the following screen is displayed:

Provide Branch schema details and SMS schema details to create dblinks between two schemas.

Click on Test Connection to assure the connection details provided are proper.



- Click 'Next' and the following screen is displayed:

EAR Name

Specify a name for the Application to be deployed.

You cannot use special characters such as '.' (Dot), ',' (comma), '\$' etc. However, you may use '_' (underscore). – Applicable for both Windows and Linux.

Context Name

Based on the Application type selected, the Installer displays the application context. However,

You may modify the default value.

Application Server

Specify the application server in which you are creating the property file. Select the appropriate one from the adjoining drop-down list.

Source Path

Provide the source path maintained.

Source Path

Provide the source path maintained.

Ear Destination Path

Provide the Ear destination path to place the generated .ear and .war file during generation of .ear and .war files.

Oracle FLEXCUBE Universal Installer 12.5.0.0.0

Oracle Banking Installer ORACLE INSTALLER

Provide Environment details.

EAR Name: FCUBS

Context Name: FCJNeoWeb

File Separator Style: Linux

Application Server: Weblogic

External JSUXML Required

External PropertyFile Required

Application Server Path: C:/Oracle/Middleware/Oracle_Home/jdeveloper/wlserver **Browse**

Source Path: C:\Work\poorna12_5\IDHOST2\Console_EXEC\Console_EXEC **Browse**

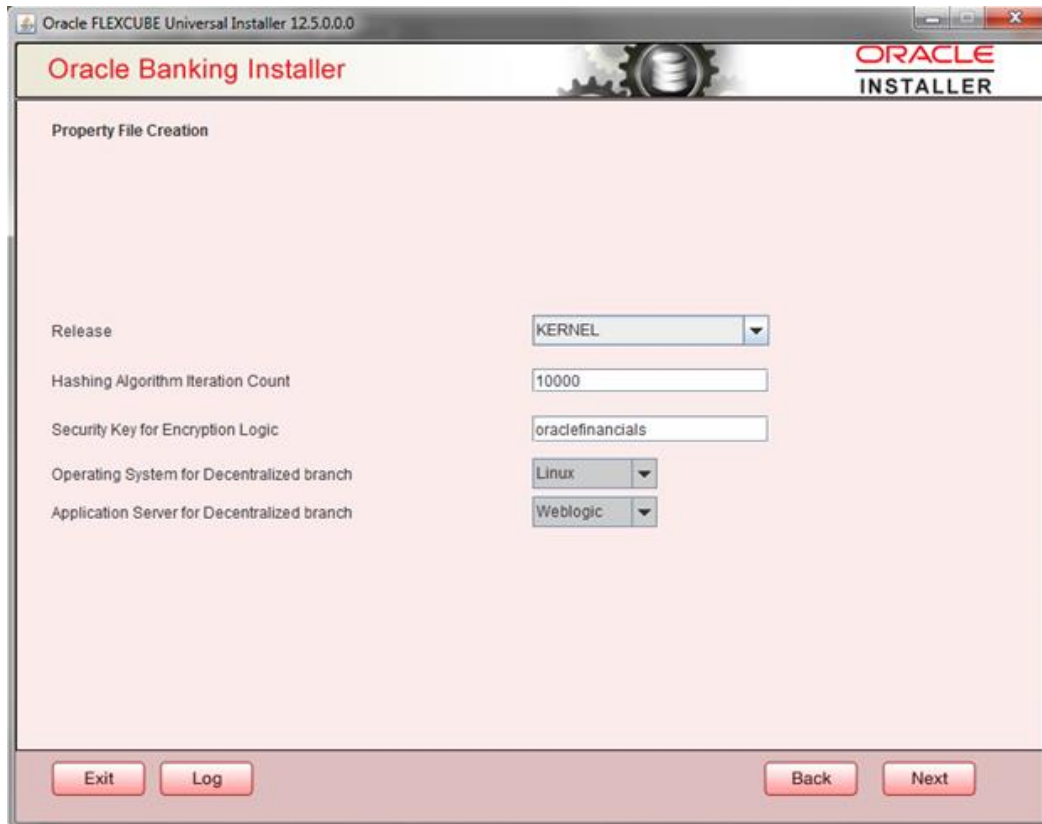
Ear Destination Path: poorna12_5\IDHOST2\PROPERTY_FILE_CREATION_20_NOV_2017 **Browse**

External JSUXML Path: **Browse**

External PropertyFile Path: **Browse**

Exit Log Back Next

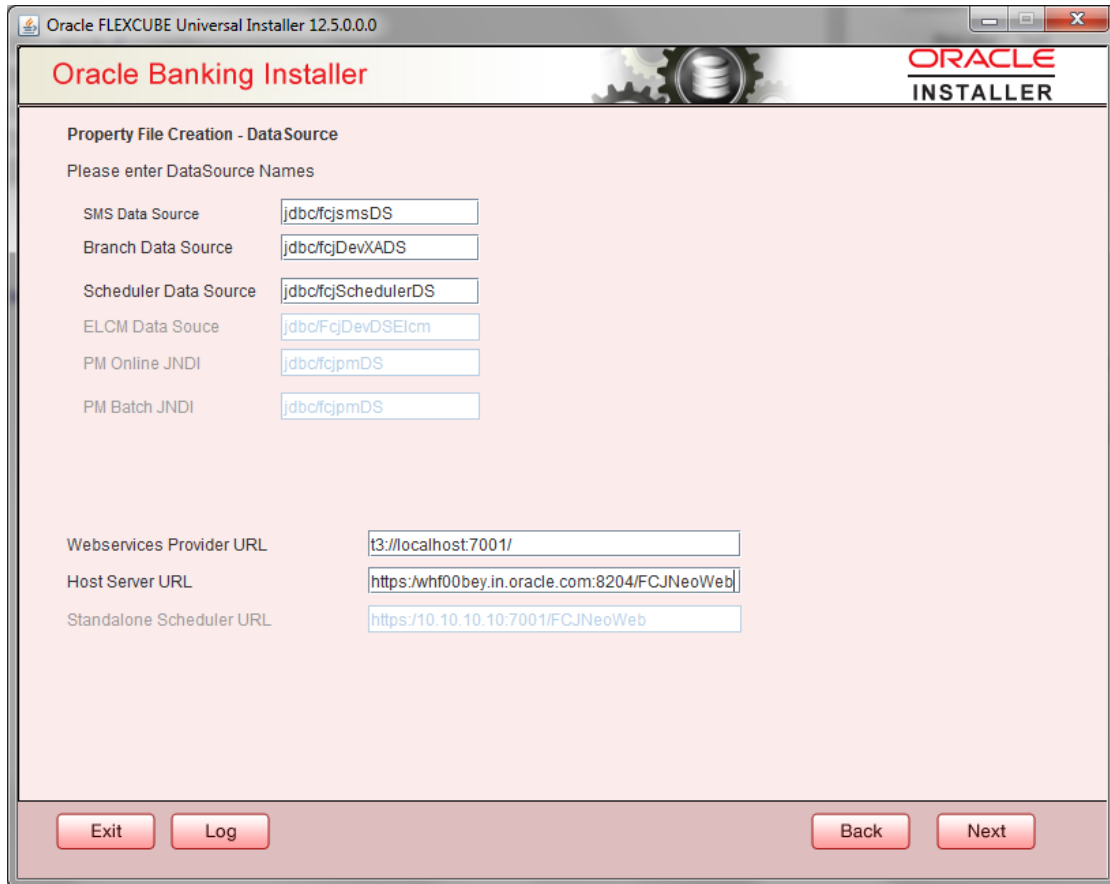
6. Click 'Next' to continue and following screen is displayed:
'Security Key for Encryption Logic' is the key (exact 16 characters) for all encryption logic.



7. Click 'Next' to continue and following screen is displayed:

Datasources:

- | | |
|-----------------------|---|
| SMS Data Source | – Provide proper JNDI names e.g.: jdbc/fcjsmsDS |
| Branch Data Source | – Provide proper JNDI names e.g.: jdbc/fcjDevXADS |
| Scheduler Data Source | – Provide proper JNDI names e.g.: jdbc/fcjSchedulerDS |
| Host Server URL | – Host URL to establish connection from Branch. |



8. Click 'Next' to continue and following screen is displayed:

Debug Logs Required

If you require debug option, select 'Yes' from the drop-down list. If you do not require debug option, select 'No'.

Work Area

Specify the work area.

For example: D:\BrnDbgs\

Signature Path

Specify the location at which the signature images are placed.

Excel Path

Specify the location at which the excel files are generated.

Data Source

Specify the JNDI location. The standard format is 'jdbc/fcjdevDS'.

Request Time Out

Specify the database request timeout value in milli seconds. This is the maximum number of seconds the database waits for a query to return the result.

Connection Time Out

Specify the database connection timeout value in seconds. This is the maximum number of seconds the application waits for a connection to the database to open.

Session Time Out

Enter the session time out value in seconds. This is the maximum number of seconds during which the application gets active without any user intervention. If there is no user intervention continuously for the duration specified here, the user session gets expire.

LOV Fetch Required

If you check this box, the option lists in Oracle FLEXCUBE displays the matching values based on the first characters that you enter in a field. If you specify the first three characters of a value to be entered in an option list and tab out, the system displays the complete list of values that are matching the first three characters.

If you do not check this, option lists does not show the matching values based on the first few characters. You need to specify the complete value against the field.

Max Image Size

Specifies the maximum image size that can be uploaded. The default size is 1048576 in bytes.

CSS Style

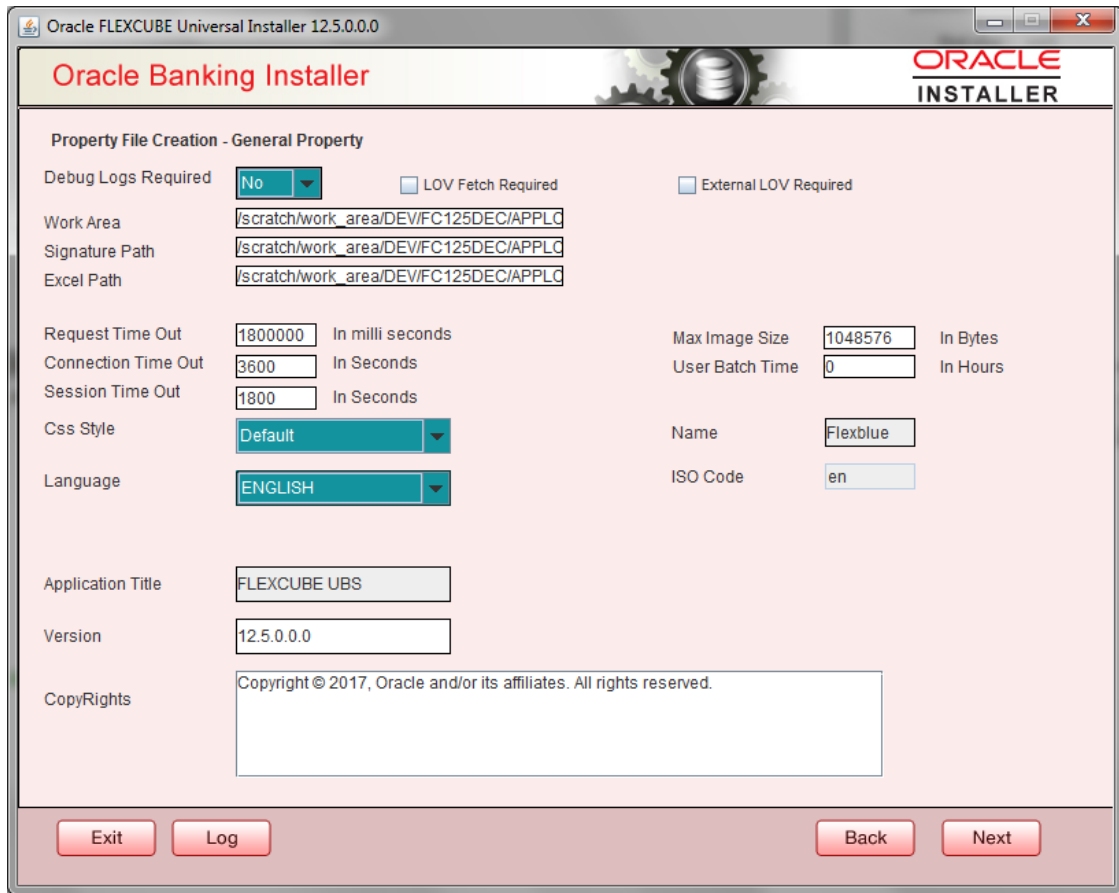
Specify the CSS style to be used from the adjoining drop down list. You can select one of the following CSS styles:

Default – select this to apply the default style provided along with Oracle FLEXCUBE

Custom – select this to apply a custom style

Name

Specify the name of the CSS style.



- Click 'Next' and the following screen is displayed:

SSO Required

Check this box to enable single sign-on (SSO). If you check this box, you need to enter the SSO Key.

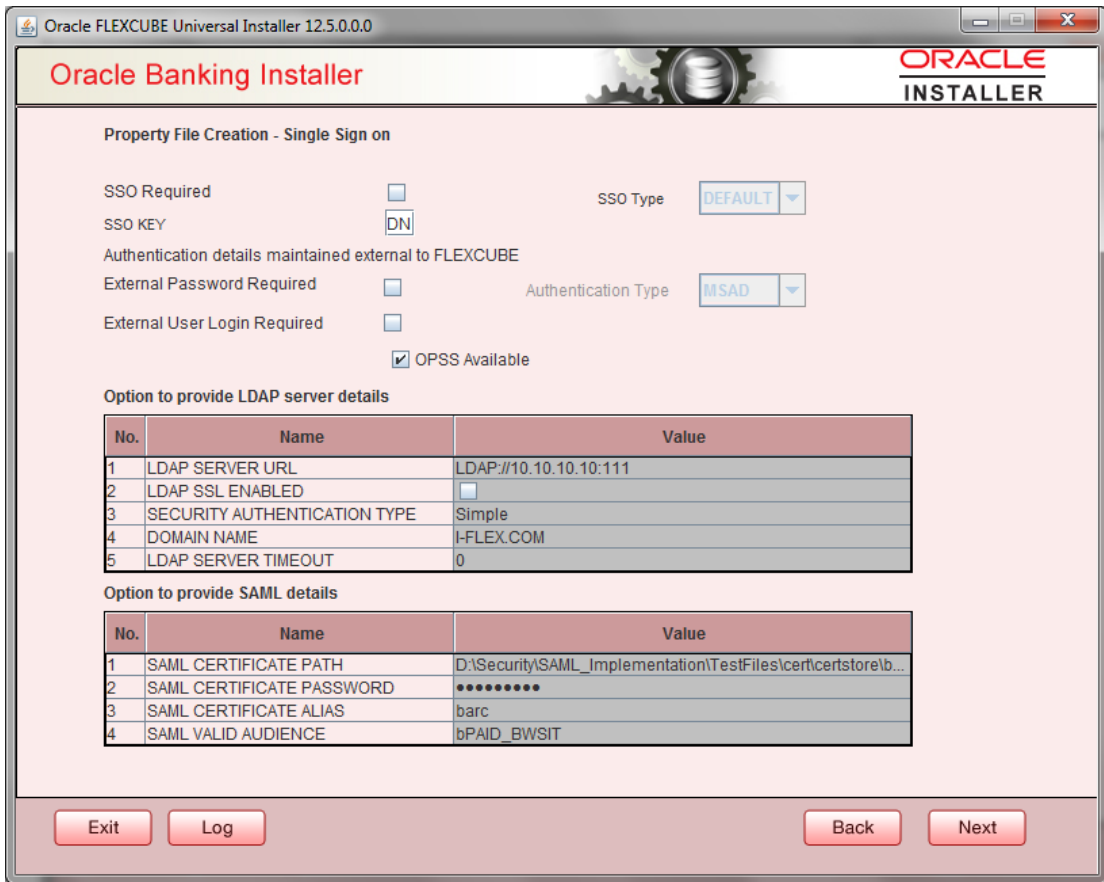
SSO Key

Specify the SSO key. If you have checked the box 'SSO Required, it is mandatory to specify the SSO key.

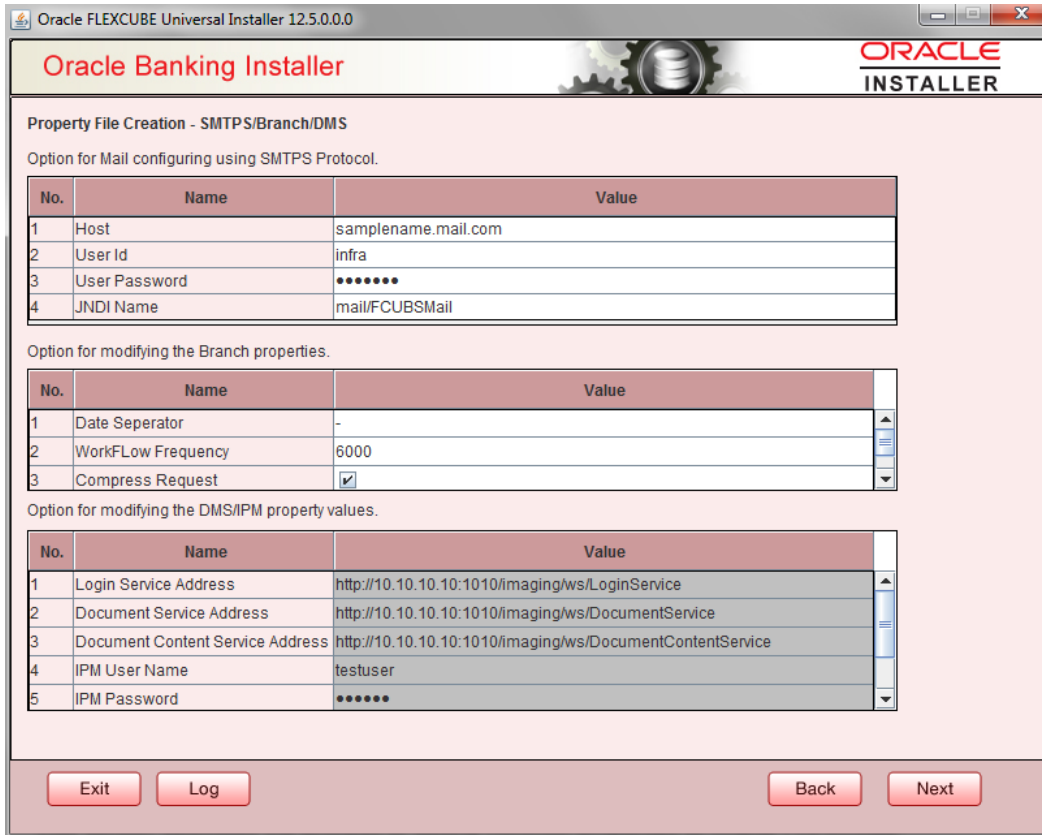
OPSS

OPSS is available only for weblogic and is not supported for Websphere.

IF OPSS available is checked for weblogic the symmetric key is not stored in the property file for security reasons.

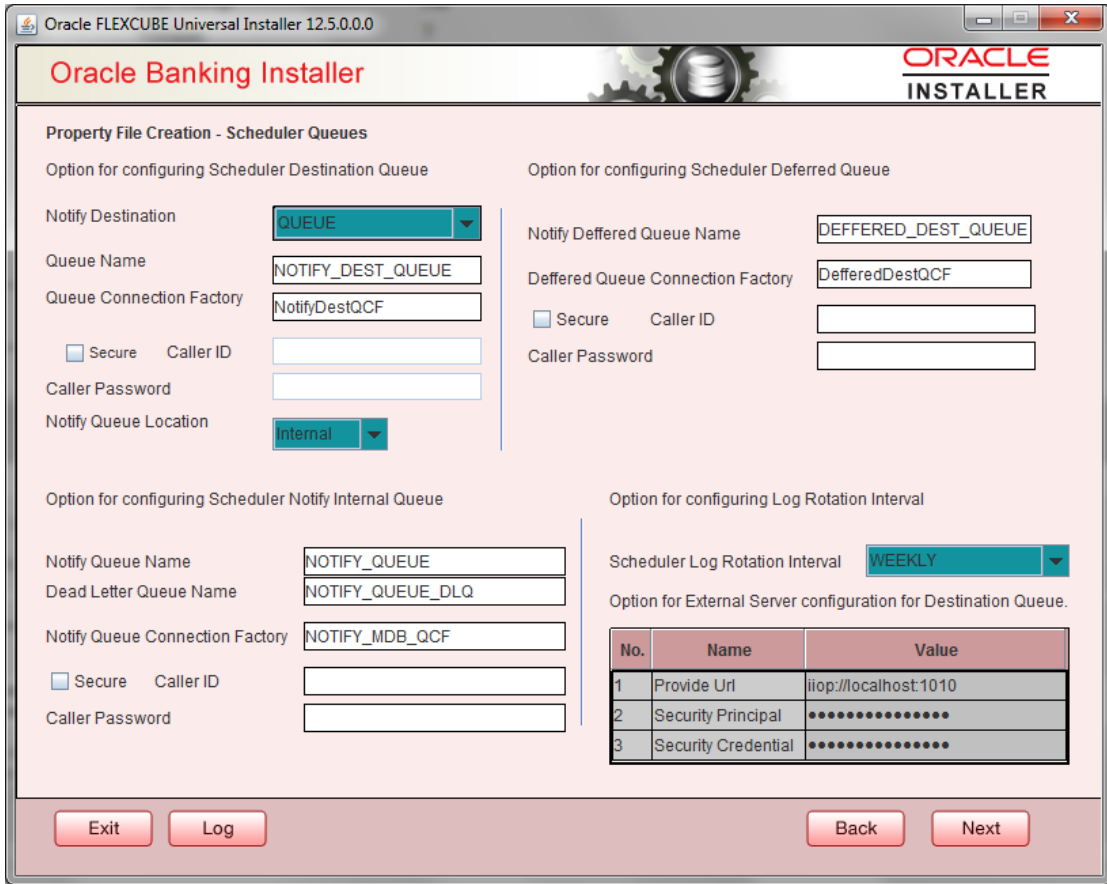


- Click 'Next' and the following screen is displayed:
Specify the Mail configuring following details:



11. Click 'Next' and the following screen is displayed:

Provide Scheduler Queue details.



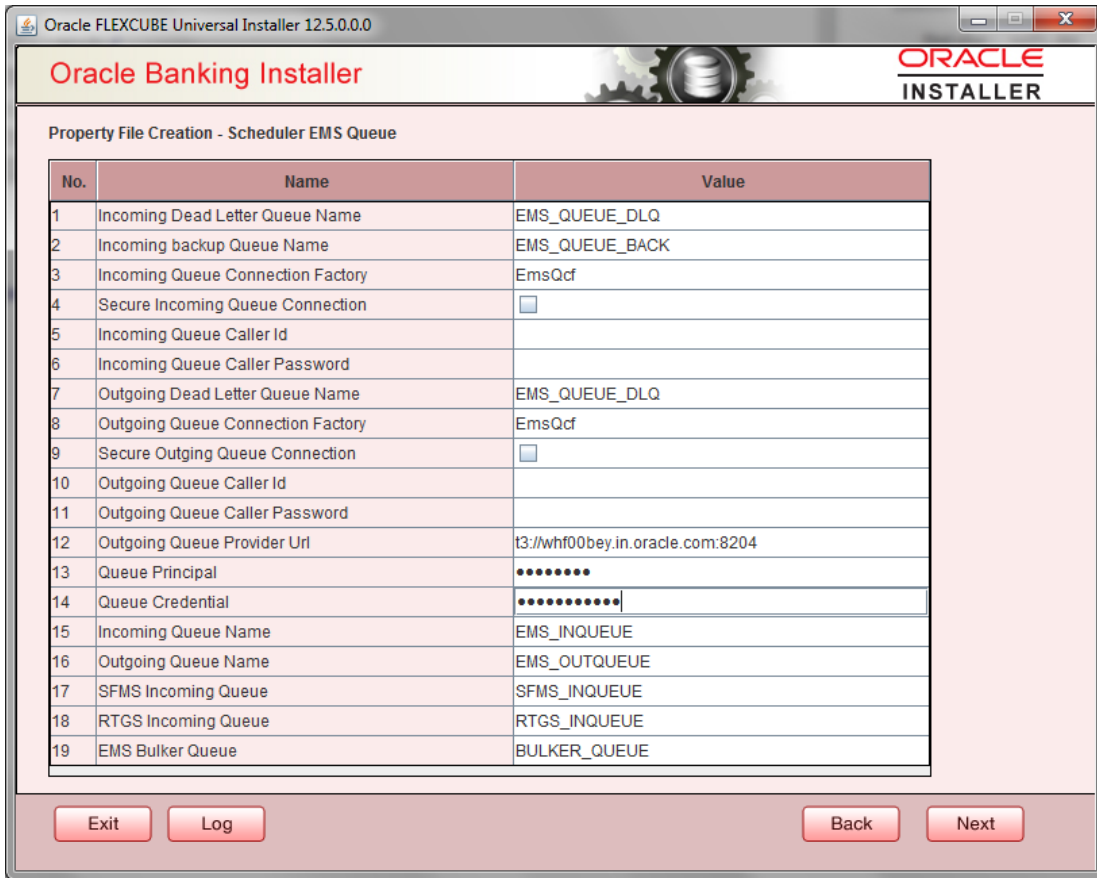
12. Click 'Next' and the following screen is displayed:

Provide Scheduler EMS Queue details.

Outgoing Queue Provider URL – It can be Host server URL.

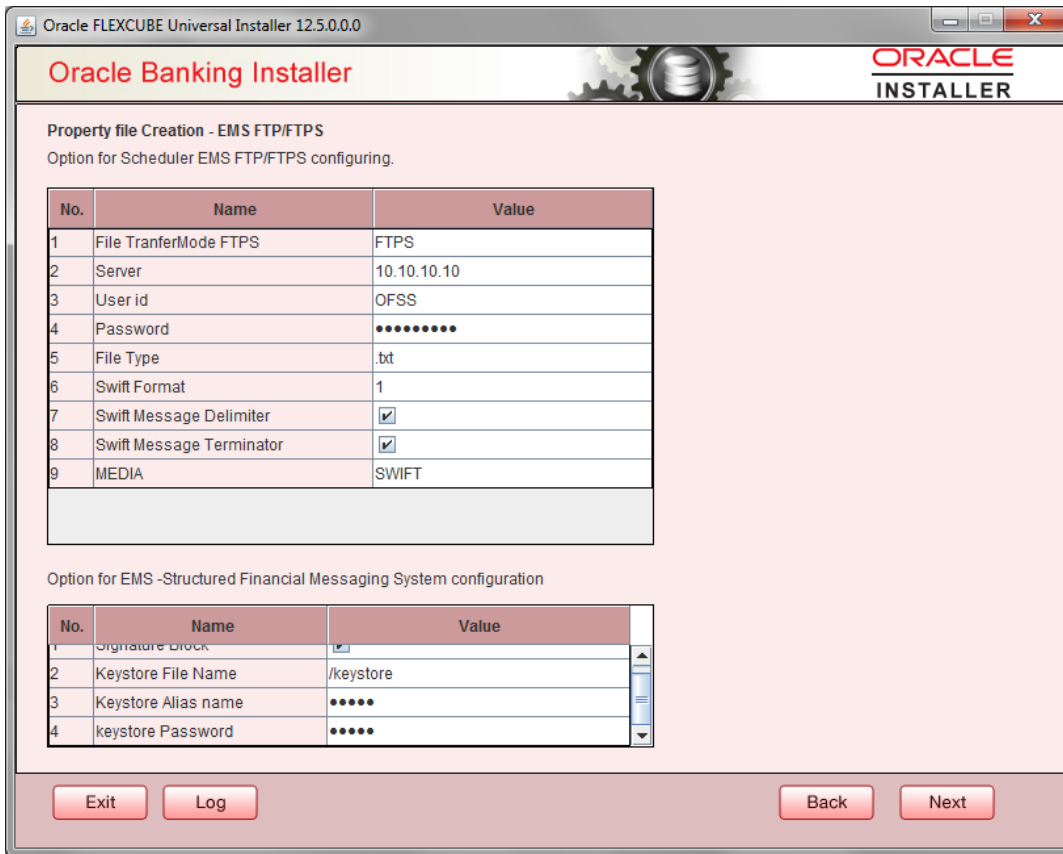
Queue Principal – It should be weblogic login username.

Queue Credential – It should be weblogic login password.



13. Click 'Next' and the following screen is displayed:

Provide EMS FTP/FTPS details



14. Click 'Next' and the following screen is displayed:
Provide Scheduler BIP Advice report configuration details.

Oracle FLEXCUBE Universal Installer 12.5.0.0.0

Oracle Banking Installer

ORACLE
INSTALLER

Property File Creation - Scheduler BIP/GI Upload Queue
Option for configuring Scheduler BIP and BIP Advice report.

Bip Queue Name: INTERNAL_BIPREPORT_QUEUE
 Bip DeadLetter Queue Name: INTERNAL_BIP_QUEUE_DLQ
 BipAdvice Queue Name: ERNAL_BIPADVREPORT_QUEUE
 BipAdvice DeadLetter Queue Name: RNAL_BIP_ADVICE_QUEUE_DLQ
 Queue connection factory: BIPQCF

Secure Caller ID:
 Caller password:

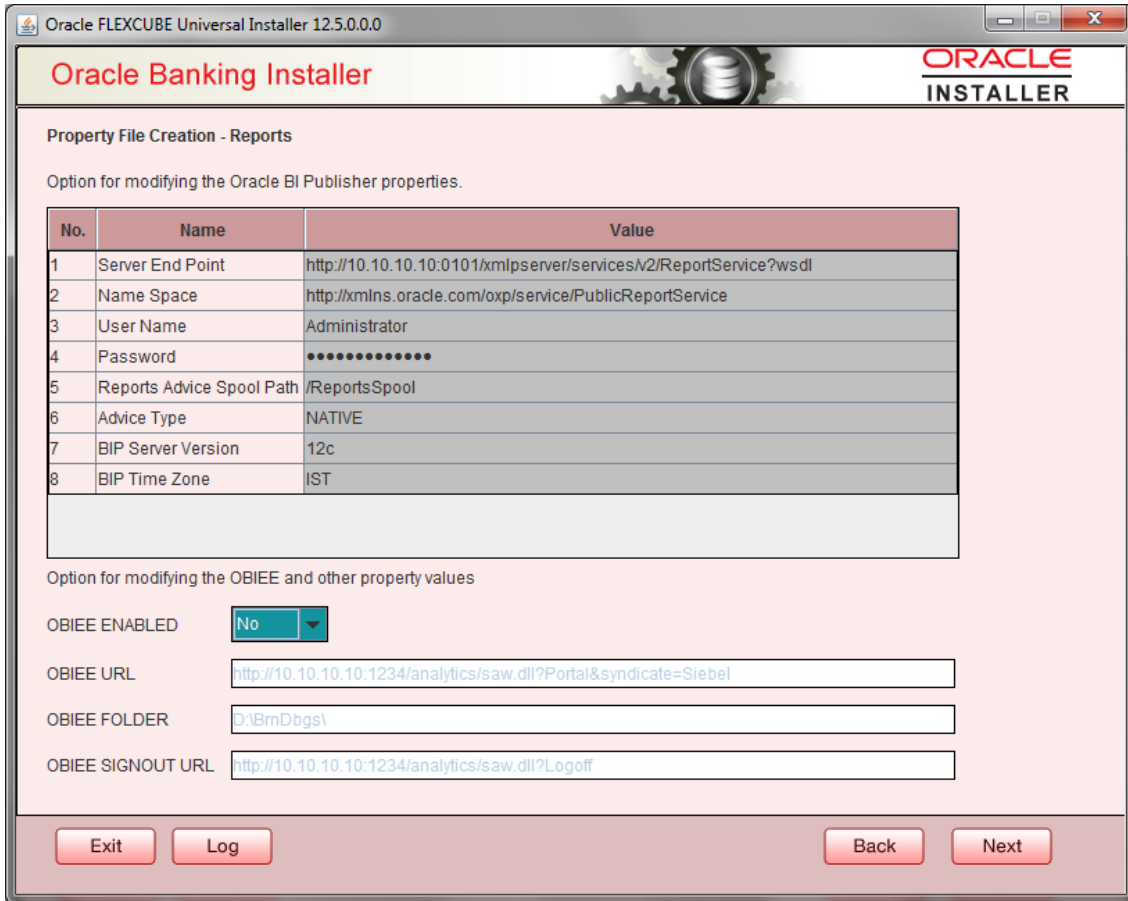
Option for configuring details for Scheduler GI Upload Queue

Queue Name: INTERNAL_GI_UPLOAD_QUEUE
 Dead Letter Queue Name: INTERNAL_GI_UPLOAD_DLQ
 Queue connection factory: GI_UPLOAD_QCF

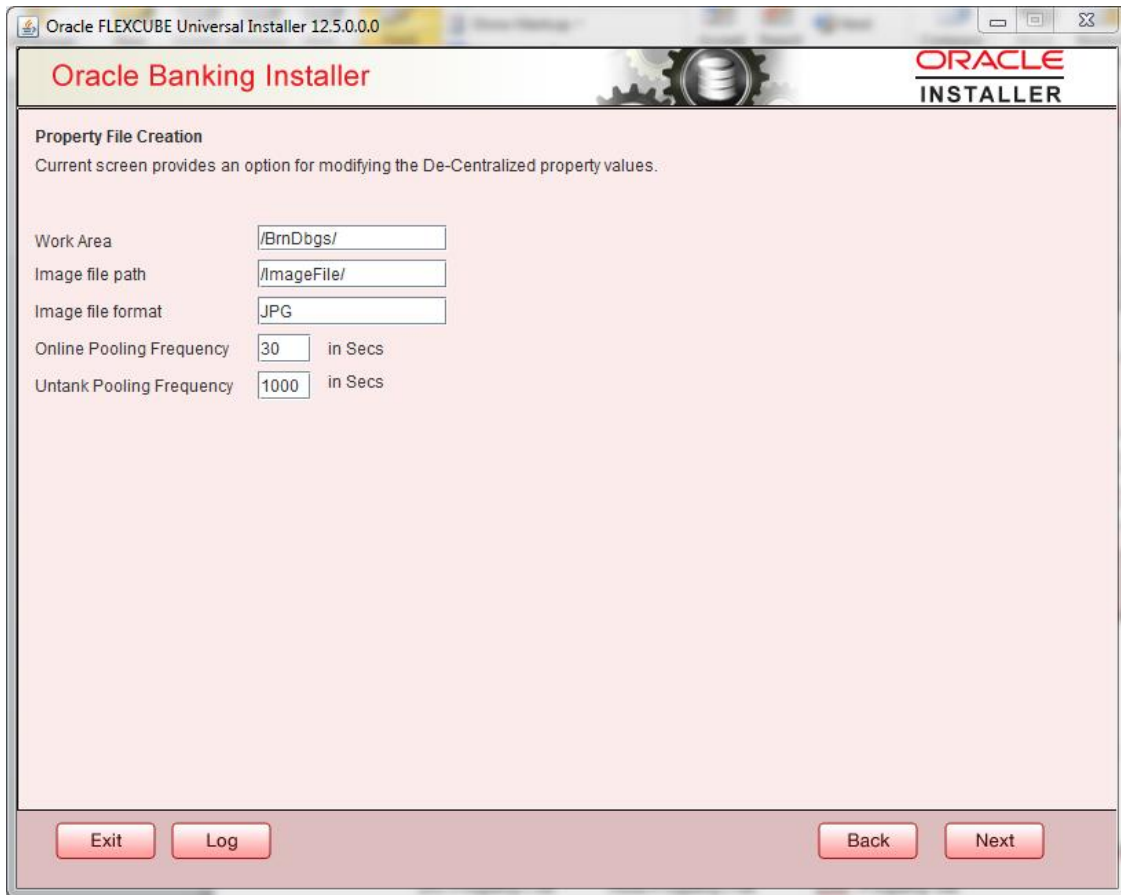
Secure Caller ID:
 Caller Password:

15. Click 'Next' and the following screen is displayed:

Provide Scheduler BI publish report configuration details.



16. Click 'Next' and the following screen is displayed



Provide the details for de-centralized work area, image file path, image file format, online pooling frequency and untank pooling frequency.

17. Click 'Next' and the following screen is displayed

Click on save property file will be built with latest properties.

Property files can be saved in a particular location and can be used for subsequent processing.

Both DC and Host property files, are saved inside property file save location under folder names - DC and HOST respectively.

Enclosed sample files for reference. Checkpoint: INIT_DATASOURCE in fcubs.properties

DC Property File



fcubs.properties

Host Property File

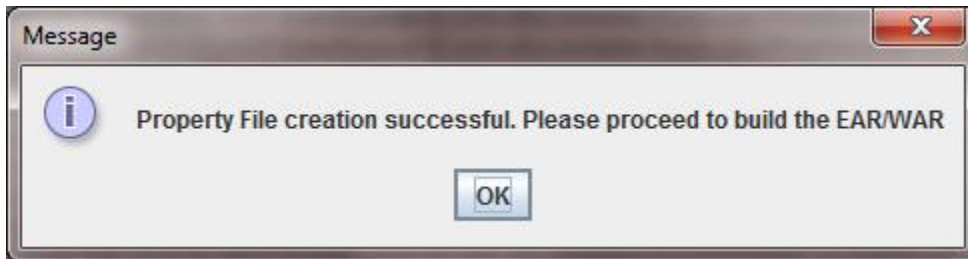
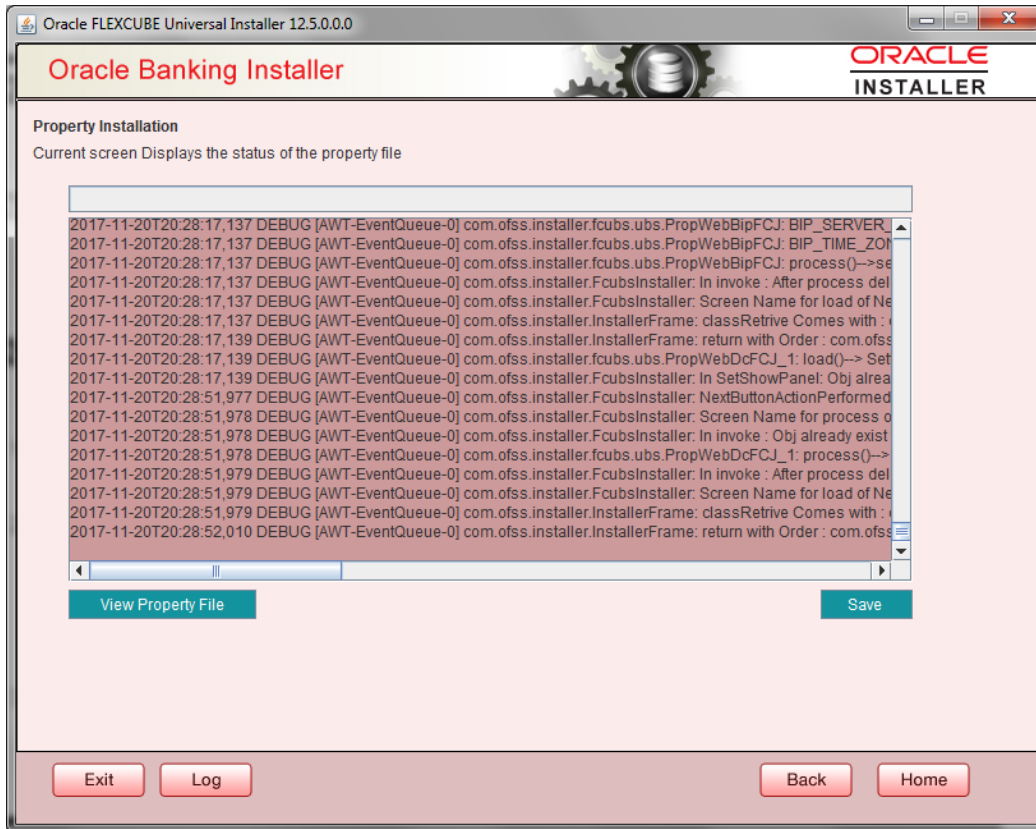


fcubs.properties

Env. Property file



env.properties



Once property file creation is completed, env.properties file will also be updated in path `INSTALLER\SOFT\GUI\logs` and `\INSTALLER\SOFT\logs`. Please note that values from `\INSTALLER\SOFT\logs\env.properties` will be taken for further steps. env.properties file is updated automatically with DC and Host property file paths generated already. Please verify these paths before proceeding.

2. Loading objects into Host & DC schema via FLEXCUBE Installer

2.1 Introduction

This chapter explains the steps to load objects into Decentralized schema using FLEXCUBE Installer. Note: Before running DB Compilation of any sort, please make sure that System Date Time format and language are provided as English, or otherwise DB Compilation might fail due to improper log names.

2.2 Loading Objects into Host & DC Schema

Before loading objects into the host and DC schema, please make sure you have atleast 10 GB SYSTEM tablespace in the database instance, and atleast 5 GB space in each schema. To load objects into Host and Decentralized schema, follow the steps given below:

1. env.properties generated in \INSTALLER\SOFT\logs path will be considered for all the database details.
2. Execute Oracle SMS DB Compiler silent Installer bat file i.e. **SMSDBCompileRun.bat** for Windows, for linux run SMSDBCompileRun.sh.

After execution is completed, Host schema should be loaded with Host objects. Invalid count should be zero after execution. Note: Invalid procedure [PR_INSTLR_POST_IMPORT](#) can be ignored.

RECOMPILATION SCRIPT



fast.sql

In case invalid count is greater than zero, fast.sql can be used for invalid re-compilation. Number of threads, and schema name has to be provided as input for the recompilation to happen, e.g. Threads = 8, Schema=DCHOST5

3. Execute Oracle Host DB Compiler silent Installer bat file i.e. **ROFCDBCompileRun.bat** for Windows, for linux run ROFCDBCompileRun.sh.

After execution is completed, Host schema should be loaded with Host objects. Invalid count should be zero after execution. If not, please run recompilation script(fast.sql) provided earlier.

```
C:\windows\system32\cmd.exe
Flex Cube UBS : Release 12.4.0.0.0 - Production on 11:48:17.53 Tue 11/21/2017
Copyright (c) 2016, Oracle Financial Services Software Ltd. All rights reserved.

Checking the write permissions.....
checking whether Installer is running.....
Creating a new flag file.....
successfully created the flag File.

Initializing the errorLevel to 0

Checking Java Home.....
Please input Java path [Example: D:\Program Files\Java\jdk1.6.0_17]
@@@@@@JAVAHOME NOT DEFINED@@@@@@
Enter JAVA HOME Directory:
```

At this point, Day-0 Setup should be done for the Host schema(if not done yet, document [FCUBS_DB_Setup](#) can be followed for the same, section 1.3.2).

Check point: In SSTB_USER table Home Entity should be updated properly after Day-0 setup.

4. Execute Oracle Branch DB Compiler silent Installer bat file
i.e.**ROFCBranchDBCompileRun.bat** for Windows, for linux run
ROFCBranchDBCompileRun.sh.

After execution is completed, DC schema should be loaded with DC objects. Invalid count should be zero. If not, please run recompilation script(fast.sql) provided earlier for branch schema(with branch schema name as input)

3. Decentralized Application setup (via WebLogic)

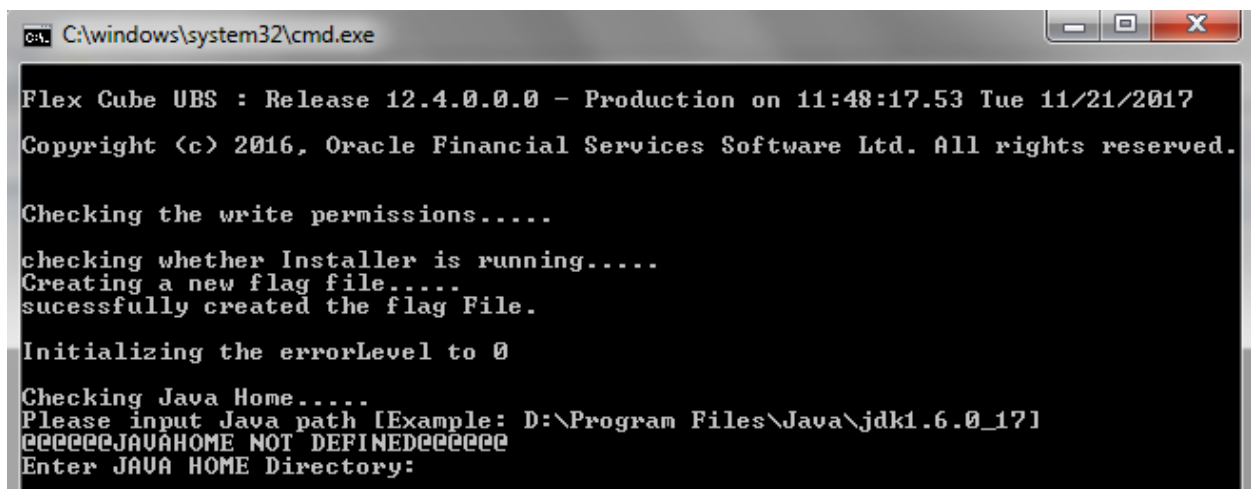
3.1 Introduction

This chapter explains the steps to setup application in WebLogic server. This includes creation and deployment of EAR and WAR files in Weblogic server. EAR and WAR has to be deployed in HOST as well as BRANCH respectively.

3.2 Application Setup

3.2.1 .ear and war file creation

1. Execute Oracle Ear creation bat, silent Installer bat file i.e. **ROFCEarRun.bat** for Windows, for linux run ROFCEarRun.sh.



```
C:\windows\system32\cmd.exe

Flex Cube UBS : Release 12.4.0.0.0 - Production on 11:48:17.53 Tue 11/21/2017
Copyright (c) 2016, Oracle Financial Services Software Ltd. All rights reserved.

Checking the write permissions.....
checking whether Installer is running.....
Creating a new flag file.....
sucessfully created the flag File.

Initializing the errorLevel to 0

Checking Java Home.....
Please input Java path [Example: D:\Program Files\Java\jdk1.6.0_17]
*****JAVAHOME NOT DEFINED*****
Enter JAVA HOME Directory:
```

2. It creates .war file and .ear file.
3. Following check points to be verified after .ear and .war file creation.

web.xml file should be proper with xml tags. If not, it will result in servlet exceptions on deployment.

3.2.2 Deploying .ear file in WebLogic server

1. Set SSL port enabled. Go to Environment->Servers-> Select soa_server1(managed server). Make sure SSL Listen Port Enabled checkbox is checked.

2. Map Data source as follows

Connection pool as follows,

URL:	<input type="text" value="jdbc:oracle:thin:@whf00blr.in.oracle.com:1522/FCPDBR2"/>	The URL of the database to connect to. The format of the URL varies by JDBC driver. More Info...
Driver Class Name:	<input type="text" value="oracle.jdbc.OracleDriver"/>	The full package name of JDBC driver class used to create the physical database connections in the connection pool. (Note that this driver class must be in the classpath of any server to which it is deployed.) More Info...
Properties:	<div style="border: 1px solid gray; padding: 5px; min-height: 40px;">User=FC125R2</div>	The list of properties passed to the JDBC driver that are used to create physical database connections. For example: server=dbserver1. List each property=value pair on a separate line. More Info...
System Properties:	<div style="border: 1px solid gray; padding: 5px; min-height: 40px;"></div>	The list of System Properties names passed to the JDBC driver that are used to create physical database connections. For example: server=dbserver1. List each property=value pair on a separate line. More Info...
Encrypted Properties:	<div style="border: 1px solid gray; padding: 5px; min-height: 40px;"> <div style="text-align: right;"><input type="button" value="Add Securely"/></div> </div>	The list of encrypted Properties passed to the JDBC driver that are used to create physical database connections. For example: password=value. There are two ways to entered the values: You can enter several values at once but the encrypted values will be visible on the screen until you save the changes. To use this option, list each property=value pair on a separate line. Values entered will be encrypted when saved. To enter the information securely, save any other changes that you wish to make to this page and click on the Add Securely button. On the Add a new Encrypted Property page, enter the property name and masked value, and click OK. Repeat for additional encrypted property values. More Info...
Password:	<input type="password" value="....."/>	The password attribute passed to the JDBC driver when creating physical database connections. More Info...
Confirm Password:	<input type="password" value="....."/>	
Initial Capacity:	<input type="text" value="1"/>	The number of physical connections to create when creating the connection pool in the data source. If unable to create this number of connections, creation of the data source will fail. More Info...
Maximum Capacity:	<input type="text" value="100"/>	The maximum number of physical connections that this connection pool can contain. More Info...
Minimum Capacity:	<input type="text" value="1"/>	The minimum number of physical connections that this connection pool can contain after it is initialized. More Info...
Statement Cache Type:	<input type="text" value="LRU"/>	The algorithm used for maintaining the prepared statements stored in the statement cache. More Info...
Statement Cache Size:	<input type="text" value="10"/>	The number of prepared and callable statements stored in the cache. (This may increase server performance.) More Info...
Advanced		
<input type="button" value="Save"/>		

File Edit View Favorites Tools Help

ORACLE WebLogic Server Administration Console 12c

Welcome, weblogic Connected to: FC125DC

Home > Summary of Domain Partitions > Summary of Partition Work Managers > Summary of Servers > AdminServer

Settings for AdminServer

Configuration Protocols Logging Debug Monitoring Control Deployments Services Security Notes

General Cluster Services Keystores SSL Federation Services Deployment Migration Tuning Overload Concurrency Health Monitoring Server Start Web Services Coherence

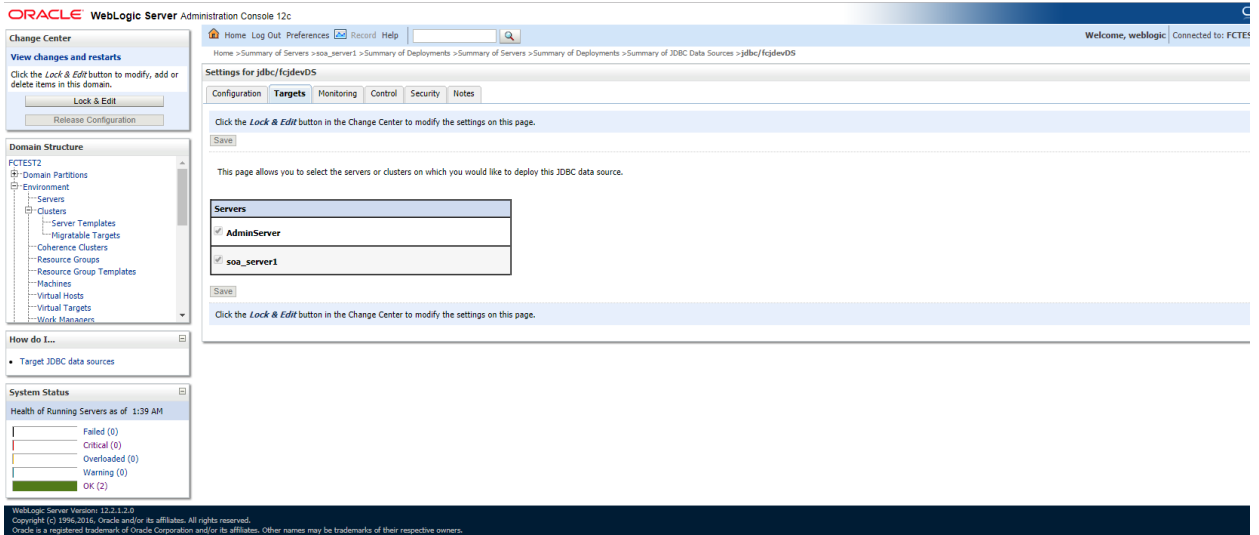
Click the **Lock & Edit** button in the Change Center to modify the settings on this page.

Use this page to configure general features of this server such as default network communications.

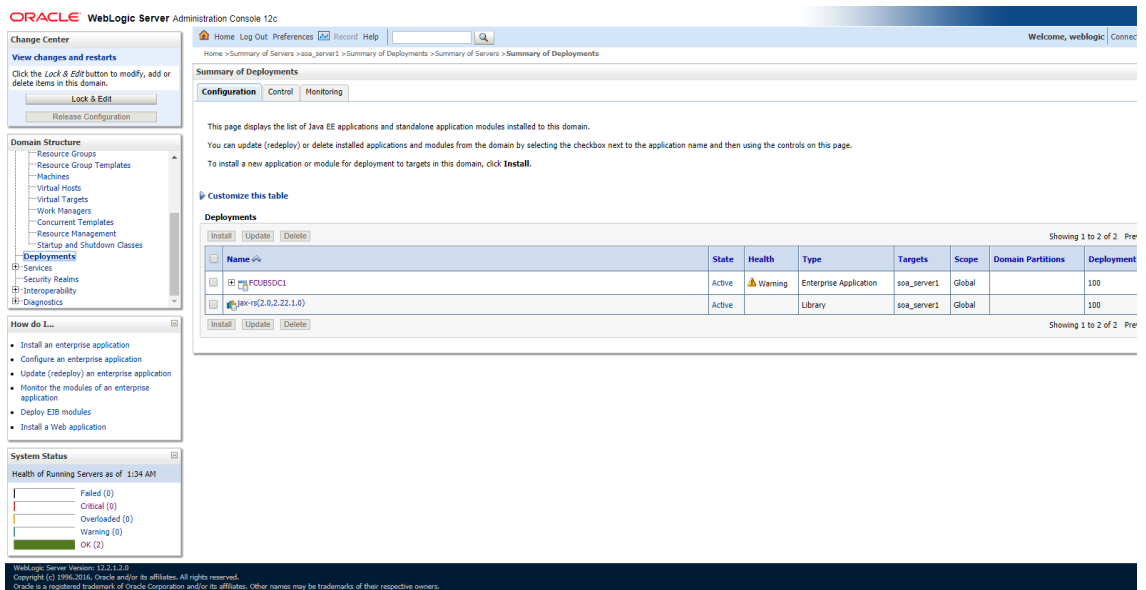
[View JNDI Tree](#)

Name:	AdminServer	An alphanumeric name for this server instance. More Info...
Template:	(No value specified) <input type="button" value="Change"/>	The template used to configure this server. More Info...
Machine:	(None)	The WebLogic Server host computer (machine) on which this server is meant to run. More Info...
Cluster:	(Stand-Alone)	The cluster, or group of WebLogic Server instances, to which this server belongs. More Info...
Listen Address:	<input type="text" value="10.184.152.169"/>	The IP address or DNS name this server uses to listen for incoming connections. For example, enter 12.34.5.67 or mymachine, respectively. More Info...
<input checked="" type="checkbox"/> Listen Port Enabled		Specifies whether this server can be reached through the default plain-text (non-SSL) listen port. More Info...
Listen Port:	<input type="text" value="7201"/>	The default TCP port that this server uses to listen for regular (non-SSL) incoming connections. More Info...
<input checked="" type="checkbox"/> SSL Listen Port Enabled		Indicates whether the server can be reached through the default SSL listen port. More Info...
SSL Listen Port:	<input type="text" value="7202"/>	The TCP/IP port at which this server listens for SSL connection requests. More Info...
<input type="checkbox"/> Client Cert Proxy Enabled		Specifies whether the HttpClusterServlet proxies the client certificate in a special header. More Info...
Java Compiler:	<input type="text" value="javac"/>	The Java compiler to use for all applications hosted on this server that need to compile Java code. More Info...
Diagnostic Volume:	<input type="text" value="Low"/>	Specifies the volume of diagnostic data that is automatically produced by WebLogic Server at run time. Note that the WLDiF diagnostic volume setting does not affect explicitly configured diagnostic modules. For example, this controls the volume of events generated for Flight Recorder. More Info...
Default Datasource:	<input type="text"/>	The JNDI name of a system resource data source used to override the default datasource. More Info...

Set the Targets to both admin server and managed server, based on the application pointing to.



3. Install jax-rs library first and then application EAR(.ear) as follows,



Start the server e.g.: FCUBSDC1 for first use.

Check Point: Maintain Day

0 Setup, RT related transactions should be completed successfully.

3.2.3 Deploying .war file in WebLogic server

1. Set SSL Port enabled.
2. Add Data Sources as follows.

ORACLE WebLogic Server Administration Console 12c

Home Log Out Preferences Record Help

Welcome, weblogic Connected to: FC125DC

Settings for jdbc/fc3devDS@branch

Configuration Targets Monitoring Control Security Notes

General Connection Pool Oracle ONS Transaction Diagnostics Identity Options

Click the **Lock & Edit** button in the Change Center to modify the settings on this page.

Save

Applications get a database connection from a data source by looking up the data source on the Java Naming and Directory Interface (JNDI) tree and then requesting a connection. The data source provides the connection to the application from its pool of database connections. This page enables you to define general configuration options for this JDBC data source.

Name: jdbc/fc3devDS@branch A unique name that identifies this data source in the WebLogic domain. [More Info...](#)

Datasource Type: GENERIC The data source type. Valid types are: [More Info...](#)

Scope: Global The scope in which the data source is available in. [More Info...](#)

JNDI Name: jdbc/fc3devDS@branch The JNDI path to where this data source is bound. By default, the JNDI name is the name of the data source. [More Info...](#)

Row Prefetch Enabled Enables multiple rows to be "prefetched" (that is, sent from the server to the client) in one server access. [More Info...](#)

Row Prefetch Size: 48 If row prefetching is enabled, specifies the number of result set rows to prefetch for a client. [More Info...](#)

Stream Chunk Size: 256 Specifies the data chunk size for streaming data types. [More Info...](#)

Save

Click the **Lock & Edit** button in the Change Center to modify the settings on this page.

WebLogic Server Version: 12.2.1.2.0
Copyright (c) 1996-2010, Oracle and/or its affiliates. All rights reserved.
Oracle is a registered trademark of Oracle Corporation and/or its affiliates. Other names may be trademarks of their respective owners.

ORACLE WebLogic Server Administration Console 12c

Home Log Out Preferences Record Help

Welcome, weblogic Connected to: FC125DC

Settings for jdbc/fc3devDS@branch

Configuration Targets Monitoring Control Security Notes

General Connection Pool Oracle ONS Transaction Diagnostics Identity Options

Click the **Lock & Edit** button in the Change Center to modify the settings on this page.

Save

The connection pool within a JDBC data source contains a group of JDBC connections that applications reserve, use, and then return to the pool. The connection pool and the connections within it are created when the connection pool is registered, usually when starting up WebLogic Server or when deploying the data source to a new target.

Use this page to define the configuration for this data source's connection pool.

URL: jdbc:oracle:thin:@ohs2311553.in.oracle.com:1521/FC The URL of the database to connect to. The format of the URL varies by JDBC driver. [More Info...](#)

Driver Class Name: oracle.jdbc.xa.client.OracleXADataSource The full package name of JDBC driver class used to create the physical database connections in the connection pool. (Note that this driver class must be in the classpath of any server to which it is deployed.) [More Info...](#)

Properties: server=FC125DC The list of properties passed to the JDBC driver that are used to create physical database connections. For example: server=observer1. List each property=value pair on a separate line. [More Info...](#)

System Properties: The list of System Properties names passed to the JDBC driver that are used to create physical database connections. For example: server=observer1. List each property=value pair on a separate line. [More Info...](#)

Encrypted Properties: The list of encrypted Properties passed to the JDBC driver that are used to create physical database connections. For example: password=value. There are two ways to enter the values: You can enter several values at once but the encrypted values will be visible on the screen until you save the changes. To use this option, list each property=value pair on a separate line. Values entered will be encrypted when saved. To enter the information securely, save any other changes that you wish to make to this page and click on the Add Securely button. On the Add a new Encrypted Property page, enter the property name and masked value, and click OK. Repeat for additional encrypted property values. [More Info...](#)

Password: The password attribute passed to the JDBC driver when creating physical database connections. [More Info...](#)

Confirm Password:

Initial Capacity: 1 The number of physical connections to create when creating the connection pool in the data source. If unable to create this number of connections, creation of the data source will fail. [More Info...](#)

ORACLE WebLogic Server Administration Console 12c

Home Log Out Preferences Record Help Welcome, weblogic Connected to: FC125

Home > Summary of Domain Partitions > Summary of Partition Work Managers > Summary of Servers > AdminServer > Summary of Servers > Summary of Deployments > Summary of JDBC Data Sources

Summary of JDBC Data Sources

Configuration Monitoring

A JDBC data source is an object bound to the JNDI tree that provides database connectivity through a pool of JDBC connections. Applications can look up a data source on the JNDI tree and then borrow a database connection from a data source. This page summarizes the JDBC data source objects that have been created in this domain.

Customize this table

Data Sources (Filtered - More Columns Exist)

Click the Lock & Edit button in the Change Center to activate all the buttons on this page.

Name	Type	JNDI Name	Targets	Scope	Domain Partitions
<input type="checkbox"/> jdbc/fqdevDSBranch	Generic	jdbc/fqdevDSBranch	AdminServer	Global	

Showing 1 to 2 of 2 Previous Next

How do I...

- Create JDBC generic data sources
- Create JDBC GridLink data sources
- Create JDBC multi data sources
- Create UCP data sources
- Create Proxy data sources

System Status
 Health of Running Servers as of 11:06 AM

- Failed (0)
- Critical (0)
- Overloaded (0)
- Warning (0)
- OK (1)

3. Install .war file generated and jax-rs.

ORACLE WebLogic Server Administration Console 12c

Home Log Out Preferences Record Help Welcome, weblogic Connected to: FC125

Home > Summary of Domain Partitions > Summary of Partition Work Managers > Summary of Servers > AdminServer > Summary of Servers > Summary of Deployments

Summary of Deployments

Configuration Control Monitoring

This page displays the list of Java EE applications and standalone application modules installed to this domain. You can update (redeploy) or delete installed applications and modules from the domain by selecting the checkbox next to the application name and then using the controls on this page. To install a new application or module for deployment to targets in this domain, click **Install**.

Customize this table

Deployments

Name	State	Health	Type	Targets	Scope	Domain Partitions	Deployment Order
<input type="checkbox"/> FCUBSAPP (12.4.0.0.0)	Active	OK	Web Application	AdminServer	Global		100
<input type="checkbox"/> jax-rs(2.0.22.1.0)	Active		Library	AdminServer	Global		100

Showing 1 to 2 of 2 Previous Next

How do I...

- Install an enterprise application
- Configure an enterprise application
- Update (redeploy) an enterprise application
- Monitor the modules of an enterprise application
- Deploy EJB modules
- Install a Web application

System Status
 Health of Running Servers as of 11:06 AM

- Failed (0)
- Critical (0)
- Overloaded (0)
- Warning (0)
- OK (1)

WebLogic Server Version: 12.2.1.2.0
 Copyright (c) 1996, 2016, Oracle and/or its affiliates. All rights reserved.
 Oracle is a registered trademark of Oracle Corporation and/or its affiliates. Other names may be trademarks of their respective owners.

4. After deployment both DC server to be started for further use.



Installer Decentralized setup
[May] [2019]
Version 14.3.0.0.0

Oracle Financial Services Software Limited
Oracle Park
Off Western Express Highway
Goregaon (East)
Mumbai, Maharashtra 400 063
India

Worldwide Inquiries:
Phone: +91 22 6718 3000
Fax: +91 22 6718 3001
www.oracle.com/financialservices/

Copyright ©[2007], [2019], Oracle and/or its affiliates. All rights reserved.

Oracle and Java are registered trademarks of Oracle and/or its affiliates. Other names may be trademarks of their respective owners.

U.S. GOVERNMENT END USERS: Oracle programs, including any operating system, integrated software, any programs installed on the hardware, and/or documentation, delivered to U.S. Government end users are "commercial computer software" pursuant to the applicable Federal Acquisition Regulation and agency-specific supplemental regulations. As such, use, duplication, disclosure, modification, and adaptation of the programs, including any operating system, integrated software, any programs installed on the hardware, and/or documentation, shall be subject to license terms and license restrictions applicable to the programs. No other rights are granted to the U.S. Government.

This software or hardware is developed for general use in a variety of information management applications. It is not developed or intended for use in any inherently dangerous applications, including applications that may create a risk of personal injury. If you use this software or hardware in dangerous applications, then you shall be responsible to take all appropriate failsafe, backup, redundancy, and other measures to ensure its safe use. Oracle Corporation and its affiliates disclaim any liability for any damages caused by use of this software or hardware in dangerous applications.

This software and related documentation are provided under a license agreement containing restrictions on use and disclosure and are protected by intellectual property laws. Except as expressly permitted in your license agreement or allowed by law, you may not use, copy, reproduce, translate, broadcast, modify, license, transmit, distribute, exhibit, perform, publish or display any part, in any form, or by any means. Reverse engineering, disassembly, or decompilation of this software, unless required by law for interoperability, is prohibited.

The information contained herein is subject to change without notice and is not warranted to be error-free. If you find any errors, please report them to us in writing.

This software or hardware and documentation may provide access to or information on content, products and services from third parties. Oracle Corporation and its affiliates are not responsible for and expressly disclaim all warranties of any kind with respect to third-party content, products, and services. Oracle Corporation and its affiliates will not be responsible for any loss, costs, or damages incurred due to your access to or use of third-party content, products, or services.